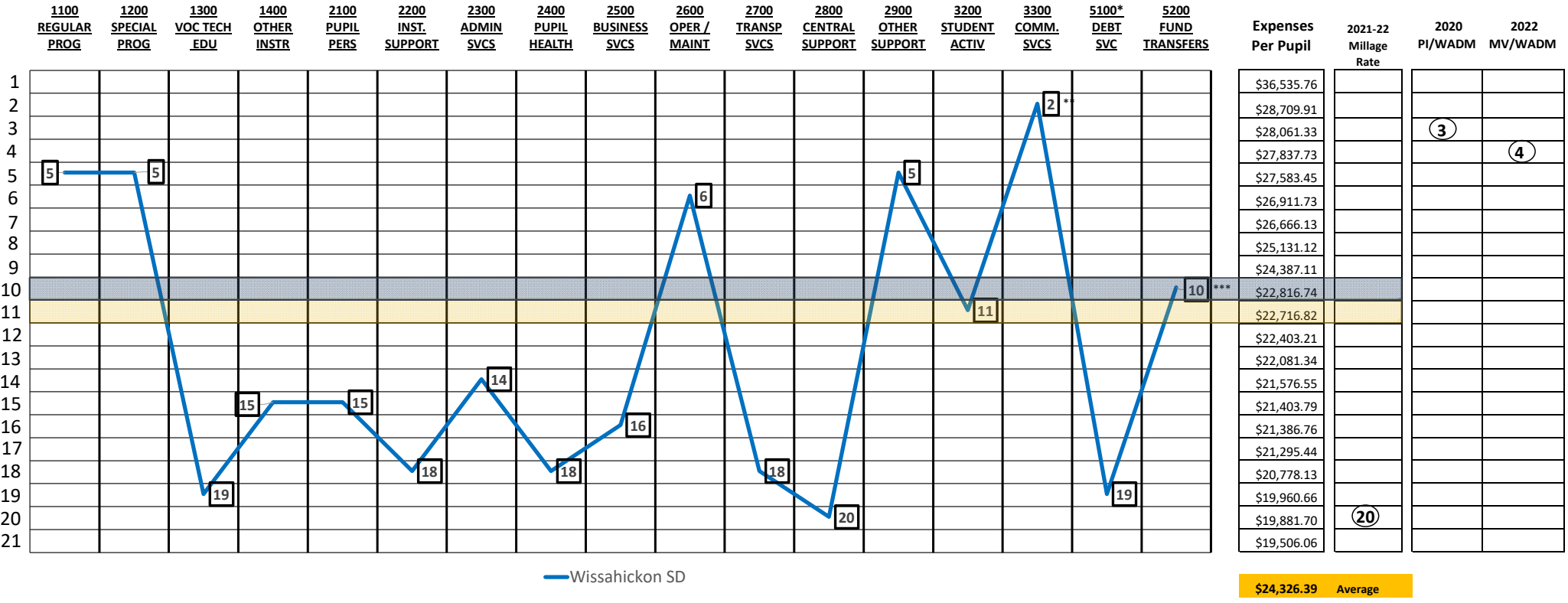


DISTRICT PER PUPIL COST COMPARISON 2021-22 Audited School Financials

Wissahickon School District Rank Among 21 Montgomery County School Districts



-Excludes Bryn Athyn
-Excludes Functions 1500

* Note - Function 5100 does not included expenses from 5120 - Refunded Bonds
 ** Note - District 18 - 21 had zero expenses
 *** Note - District 19 - 21 had zero expenses

2016-2017 Wissahickion Total Expense Per Pupil were ranked #8 at \$22,081
 2017-2018 Wissahickion Total Expense Per Pupil were ranked #11 at \$21,868
 2018-2019 Wissahickion Total Expense Per Pupil were ranked #11 at \$21,633
 2019-2020 Wissahickion Total Expense Per Pupil were ranked #10 at \$21,786
 2020- 2021 Wissahickion Total Expense Per Pupil were ranked #10 at \$22,607

Wissahickon School District Tax Increase Compared to Act 1 Index

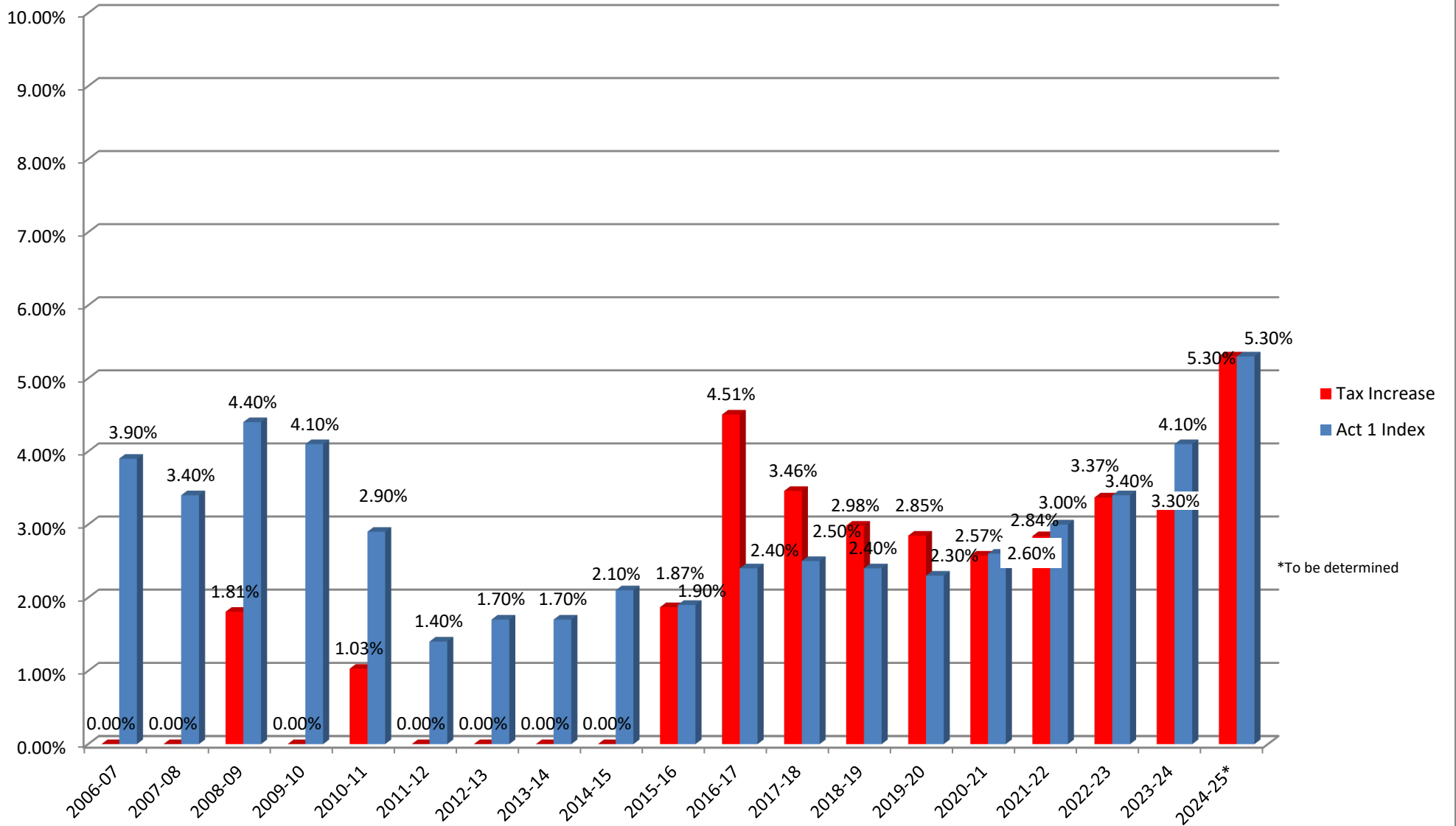
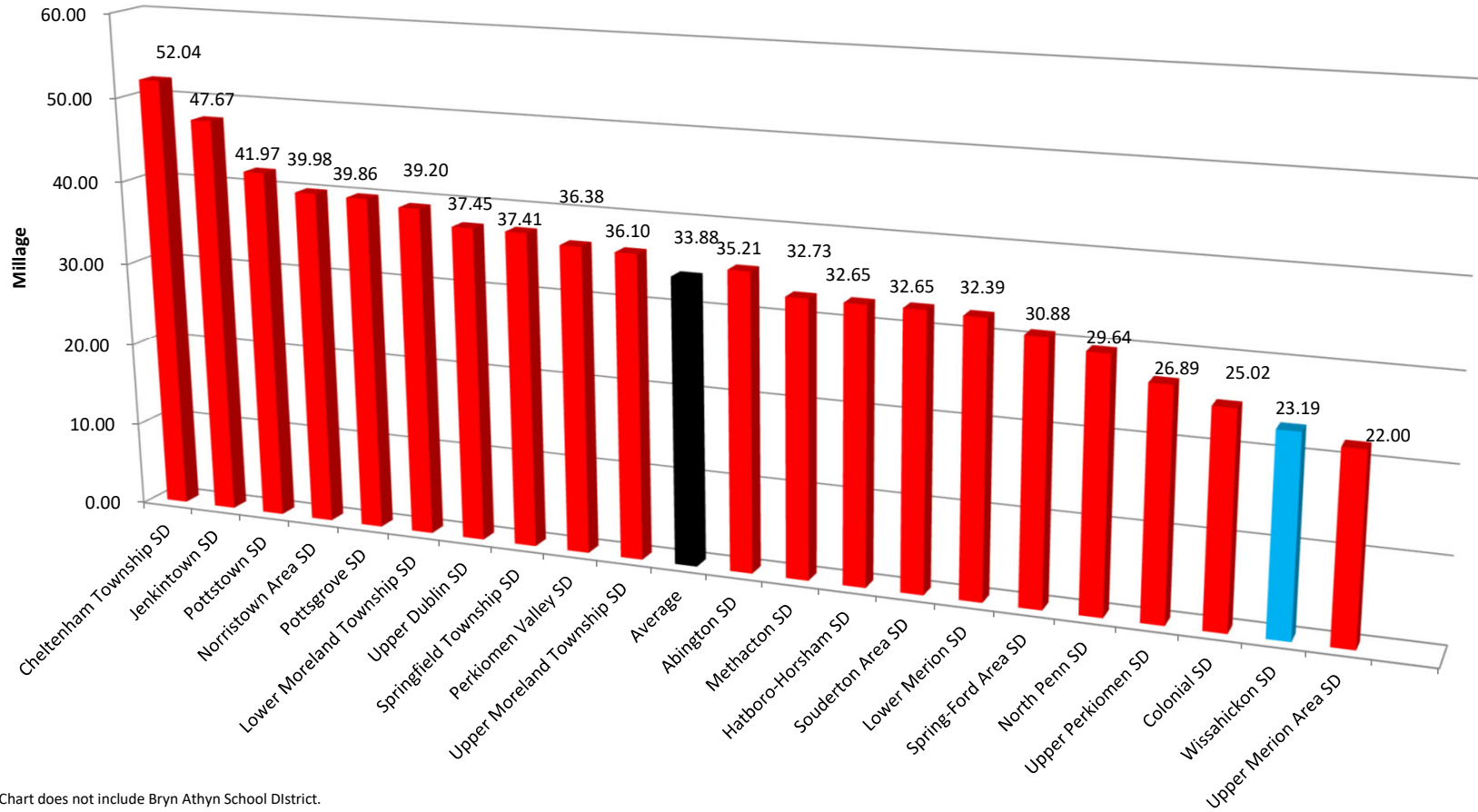


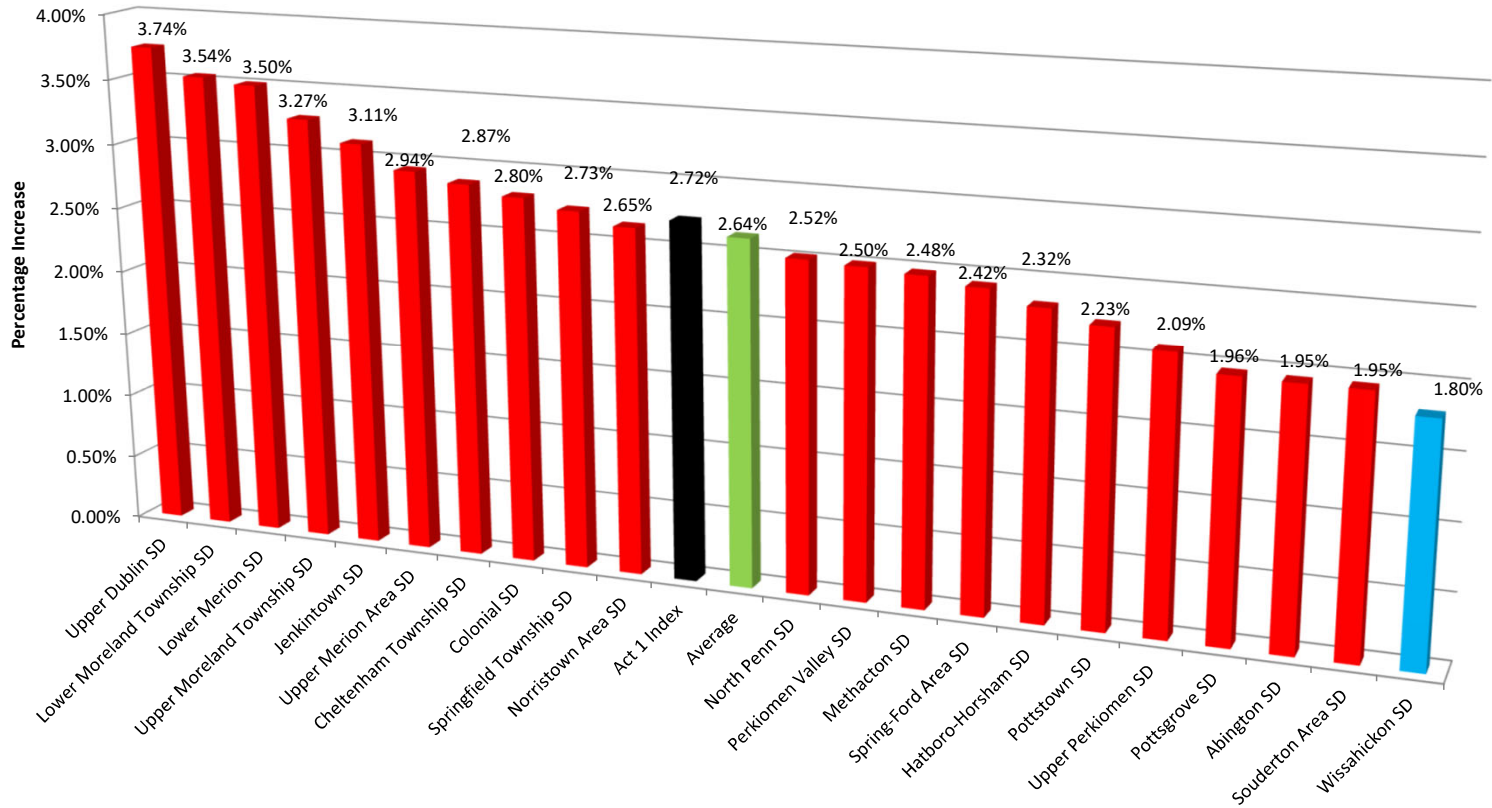
CHART B

Montgomery County School District Millage Rate Comparison 2023-2024



Note: Chart does not include Bryn Athyn School District.
 Source: <http://www.education.pa.gov/Teachers%20-%20Administrators/School%20Finances/Finances/FinancialDataElements/Pages/default.aspx#tab-1District>

Montgomery County School District Average Tax Increase Last Seventeen Years



Note: Chart does not include Bryn Athyn School District
 Chart represents 2007-08 through 2023-2024
 * - Act 1 Index started in 2005-06 - average calculated on last seventeen years

FINANCIAL INFORMATION

TAX REVENUE AT DIFFERENT RATES

TAX IMPACT OF BUDGET @ 0.0% INCREASE

2023/24 Budgeted Revenue	<u>80,777,421</u>
2024/25 Estimated Revenue	<u>81,814,644</u>
Increased Revenue	\$1,037,223

TAX IMPACT OF BUDGET @ 1.00% INCREASE

2023/24 Estimated Revenue	81,814,644
2024/25 Estimated Revenue	<u>82,632,790</u>
Increased Revenue	\$818,146

TAX IMPACT OF BUDGET @ 5.30% INCREASE (Act 1 Limit =5.3%)

2023/24 Estimated Revenue	81,814,644
2024/25 Estimated Revenue	<u>86,150,820</u>
Increased Revenue	\$4,336,176

FINANCIAL INFORMATION

TAX IMPACT SHEET

2023/24 Millage Rate 23.19

2023/24 Typical Tax Bill	<u>Assessment</u>	<u>Millage</u>	<u>Total</u>
	\$200,000	23.19	\$4,638.00
	\$250,000	23.19	\$5,797.50
*District Average	\$210,470	23.19	\$4,880.80

2024/25 Millage Rate 1.00% Increase 23.42

2024/25 Typical Tax Bill	<u>Assessment</u>	<u>Millage</u>	<u>Total</u>
	\$200,000	23.42	\$4,684.38
	\$250,000	23.42	\$5,855.48
*District Average	\$210,470	23.42	\$4,929.61

Increase \$48.81

2024/25 Millage Rate 5.30% Increase (Act 1 limit = 5.3%) 24.42

2024/25 Typical Tax Bill	<u>Assessment</u>	<u>Millage</u>	<u>Total</u>
	\$200,000	24.42	\$4,883.81
	\$250,000	24.42	\$6,104.77
*District Average	\$210,470	24.42	\$5,139.48

Increase \$258.68

*2023 Montgomery County Board of Assessments
Act 1 residential exclusions