



Using an Equity Lens for a Culturally Responsive & Inclusive Curriculum

Wissahickon School District

Presentation to the Board's Racial Equity Oversight Committee
March 21, 2022



Agenda



What is Curriculum?



Curriculum Review Process



Curriculum Audit Tool



What the Research Says



Next Steps



Feedback from Committee



What is Curriculum?

The *what* and *why* behind the curriculum review process.



Curriculum Review Process: The What & Why



An intentional approach to reviewing curriculum **to enhance student learning, engagement, experience, and outcomes.**



A critical examination of resources and who and what is represented in them and how they are represented.



A purposeful and collaborative reflection of the intended curriculum and its alignment with the implemented curriculum.

An Equity Lens



Curriculum Review Process: Prior to 2021

- Form Steering Committee.
- Begin writing shared vision and mission statements.
- Review materials and resources.
- Plan and provide professional development.
- Develop common assessments and rubrics.
- Revise the curriculum, assessments, pacing guides and scope and sequences.
- Review student assessments to gain information about the current program.
- Develop and conduct surveys to gain additional information about the current program.



Curriculum Review Process: 2021-2022

Using an Equity Lens

- Form Steering Committee.
- Begin writing shared vision and mission statements.
- Review materials and resources.
- Plan and provide professional development.
- Develop common assessments and rubrics.
- Revise the curriculum, assessments, pacing guides and scope and sequences.
- Review student assessments to gain information about the current program.
- Develop and conduct surveys to gain additional information about the current program.



Steering Committee's Goal

Build cohesiveness within the group to engage in purposeful conversations within members' departments.



2021-2022: Social Studies Department



Exploration and Evaluation Process



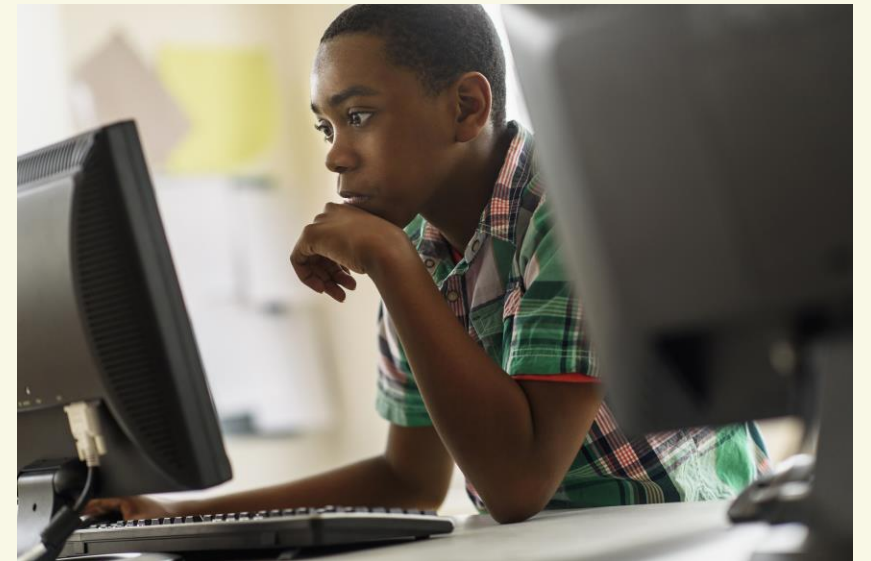
Use of Equity Lens



Employment of Culturally Responsive Approach



Examination of cultural relevancy in the classroom



2021-2022: Social Studies Department

How do we move the curriculum forward from an additive to a transformative to a social action approach?

Factors of Influence

- Where is our staff regarding their levels of understanding?
- Time to curate resources and stories to develop the curriculum
- Time to research other stories and construct curriculum
- Time to examine layers of change within course





Summary of Curriculum Review Cycle

- **Stage One: Evaluation, Assessment, and Research**

This stage focuses on the research of best practices, site visitations, review of program evaluation data (Stage Five), and the establishment of a K-12 curricular framework.

- **Stage Two: Development and Field Study**

This stage focuses on the development and writing of the revised curriculum, a survey of resources, and the determination of those resources that will best support the written curriculum.

- **Stage Three: Initial Implementation and Professional Development**

This stage focuses on the implementation of the revised curriculum, assessments, resources, and related professional development.



Summary of Curriculum Review Cycle

- **Stage Four: Full Implementation**

The program is fully implemented with a continued focus on student performance, best practices, state standards and common assessments.

- **Stage Five: Monitoring**

During this stage, the program is closely monitored and student performance data is collected relative to the quality of the current program, its alignment to state standards, and its overall implementation.



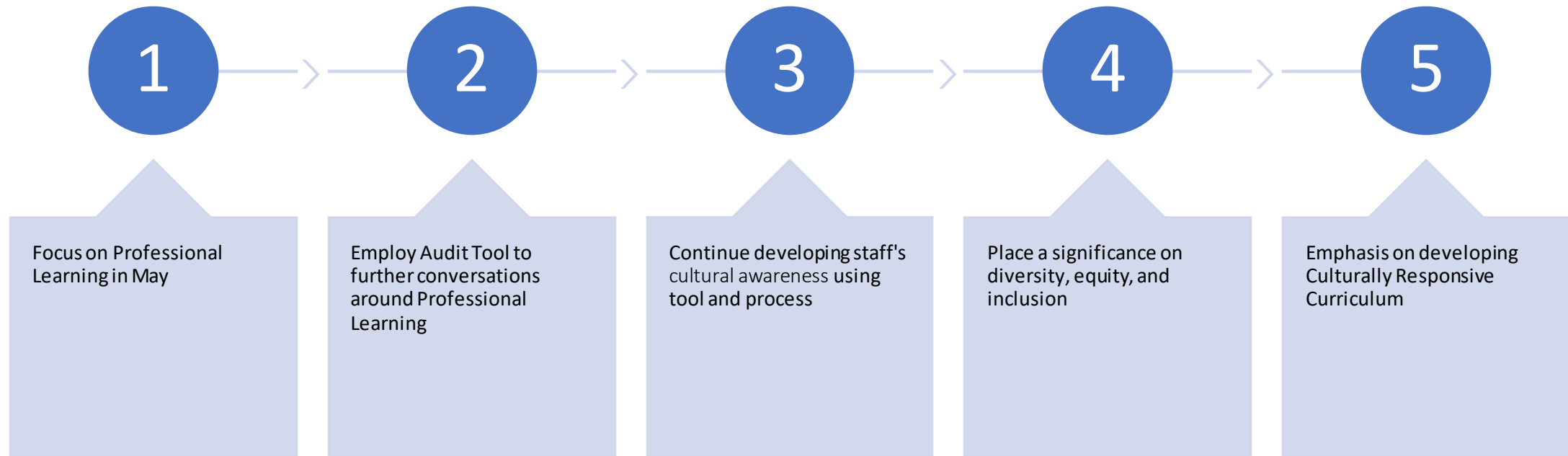
Curriculum Review Cycle: Next Steps

2021-2022 Curriculum Audit Tool

- **Purpose:** To identify any inequities that exist in the curriculum and to raise staff's level of awareness to make necessary changes
- To further conversations around Professional Learning
- Highlights areas that need targeting in the curriculum
- Formal shifts will be embedded in the review process.
- **Data** highlights that staff is on the continuum and the need to continue with professional learning on cultural proficiency

Curriculum Audit Tool: Next Steps

Another data point to determine where we are...



What the Research Says

Curriculum is a critical factor in student academic success.

Provides opportunities to review progress and to include new and relevant topics

Offers consistency across courses

Fosters ongoing discussions about curriculum among all stakeholders involved, students, teachers, administration, parents, and communities to identify needs and strengths

Creates a space for teachers to share best practices, knowledge, and resources with one another

What the Research Says Connections to Curriculum

- An inclusive curriculum helps teachers and students understand different perspectives, appreciate others' strengths, and build empathy.
- The benefits of social and emotional learning (SEL) are well-researched, with evidence demonstrating that an education that promotes SEL yields positive results for students, adults, and school communities (CASEL).



Questions, Feedback, & Additional Ideas to Move Us Forward