

Back to School, Safely

School Bus Stopping Laws Refresher

DID YOU KNOW?

Every day in Pennsylvania, hundreds of motorists fail to stop for school buses and put the lives of children at risk. In a single day, more than 250 cars pass school buses in Pennsylvania, putting our students at risk.

WHEN TO STOP FOR A STOPPED SCHOOL BUS IN PENNSYLVANIA

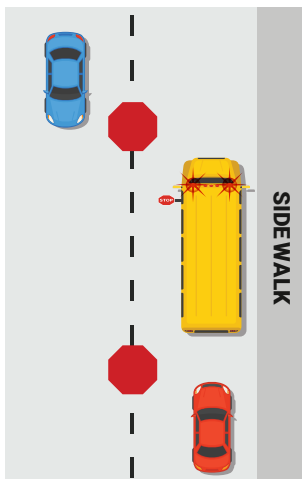


Flashing YELLOW lights means slow down and prepare to stop.

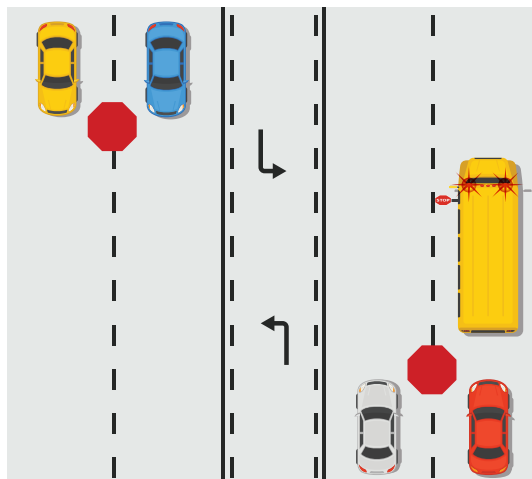


Flashing RED lights means you must stop at least 10 feet away from the bus.

TWO LANE



MULTI-LANE PAVED ACROSS



Drivers opposite a physical barrier may proceed with caution on a divided highway.

WHAT YOU NEED TO KNOW

1 Red flashing lights mean stop.

Red flashing lights mean that a school bus is stopped and children are getting on or off. All drivers, unless divided by a physical barrier or greenway, must stop at least 10 feet in front of the bus.

2 Watch out for yellow lights.

Flashing yellow lights indicate that a school bus is preparing to stop or slow down to unload or load children. When a driver sees yellow flashing lights, they should slow down and prepare to stop.

3 Know the law

Traffic approaching a stopped school bus from either direction must stop. The only exception is for traffic on the opposite side of a physical barrier.

THE CONSEQUENCES FOR ILLEGALLY PASSING A SCHOOL BUS

\$300

According to Pennsylvania law, drivers who illegally pass a stopped school bus equipped with photo enforcement cameras will face a \$300 civil penalty.

